

3880 Salem Lake Dr., Long Grove, IL

\$18-\$23/SF FS



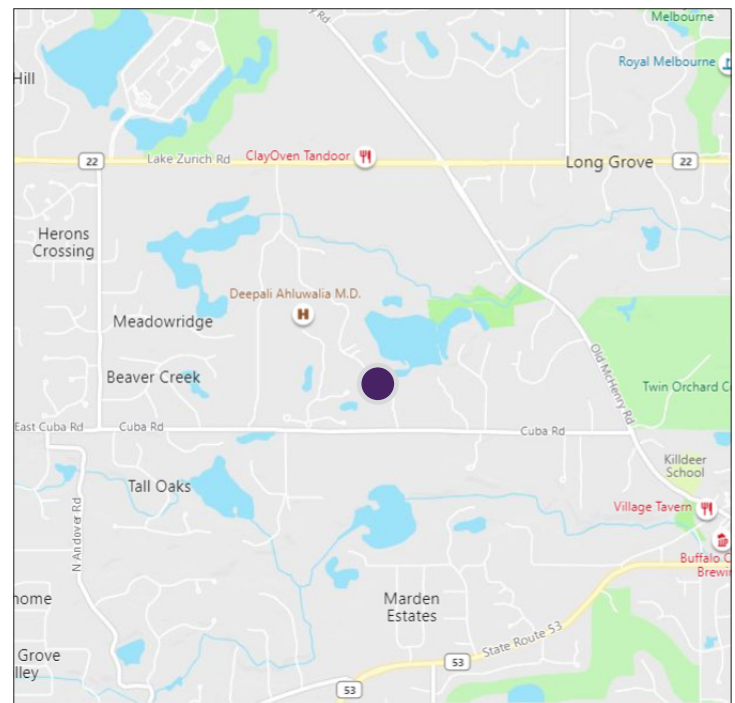
Property Highlights

- Two newly remodeled office suites - Suites are 1,308 SF and 2,015 SF
- Office suites include spacious open area with reception and private offices
- Part of a well-maintained, two-story landmark corporate office building
- Building amenities include: a centrally located elevator, complete dining facilities with gas fireplace, workout facility with men's and women's locker room and an elegant reception area
- Ample parking available
- Easy access to Route 53, expressways and numerous restaurants in the area.
- Zoning: C

Property Overview

Two newly remodeled office suites in a well-maintained landmark corporate office building in Long Grove are available for lease. Suite square footage is flexible but spaces are approximately 1,308 square feet and 2,015 square feet. Both suites boast a spacious open layout with reception area and private offices. Rent includes shared use of lunch room, large meeting room and exercise room. The office suites are part of a 26,180 square foot Class A office building on a 7+ acre lot. The building has a historical occupancy over 85%. The building amenities include a centrally located elevator, complete dining facilities with gas fireplace, workout facility with men's and women's locker room, elegant reception area and ample parking. The location provides easy access to Route 53, expressways and numerous restaurants in the area.

Long Grove is a village in southern Lake County and is approximately 35 miles northwest of the city of Chicago.



DEMOGRAPHICS	1 Mile	3 Mile	5 Mile
Population	1,322	43,912	179,153
Households	413	15,137	65,296
Average Income	\$190,460	\$117,788	\$102,341

Brad Thompson

Vice President
(312) 338 - 3012

bthompson@mpirealestate.com

Vince Pine

Vice President
(312) 338 - 3016

vpine@mpirealestate.com

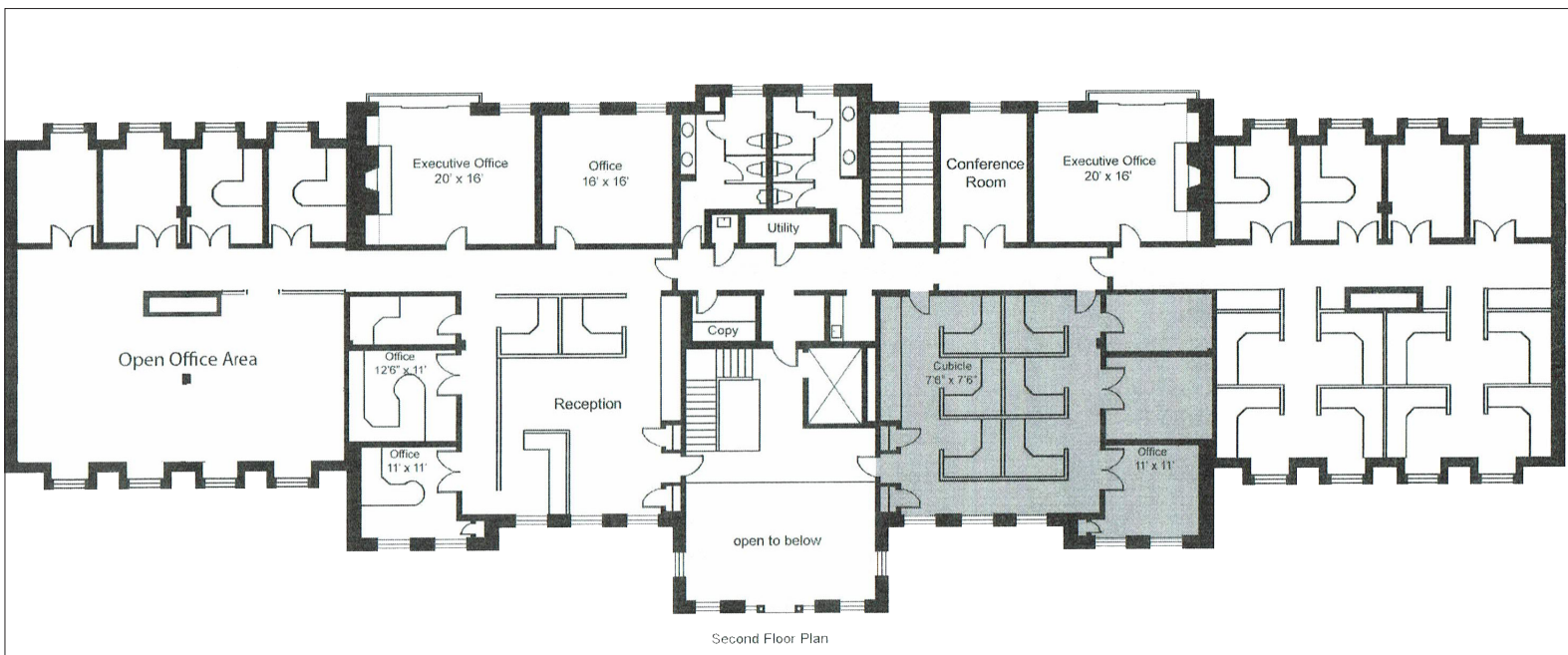
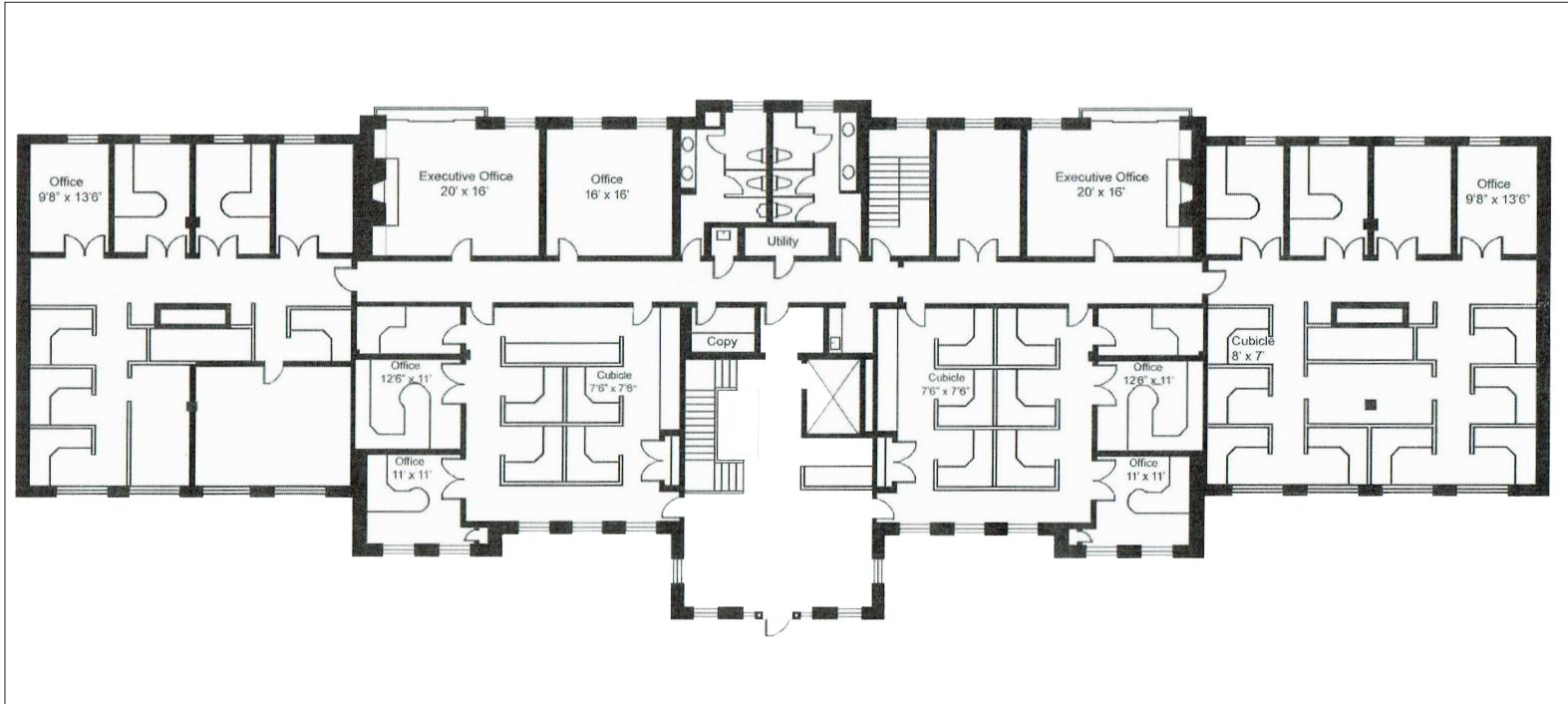
mpirealestate.com

All information provided herein is from sources deemed reliable. No representation is made as to the accuracy thereof and it is submitted subject to errors, omissions, changes, prior sale or lease or withdrawal without notice. Projections, opinions, assumptions and estimates are presented as examples only and may not represent actual performance. Consult tax and legal advisors to perform your own investigation. No commission will be paid to a broker that is representing themselves, their company, another broker or representative of their company, or a member of the broker's family. An affidavit will be required to certify that the principal is not acting as a broker in any manner.

3880 Salem Lake Dr., Long Grove, IL

\$18-\$23/SF FS

Floorplan - First and Second Level



Brad Thompson
Vice President
(312) 338 - 3012
bthompson@mpirealestate.com

Vince Pine
Vice President
(312) 338 - 3016
vpine@mpirealestate.com

mpirealestate.com

All information provided herein is from sources deemed reliable. No representation is made as to the accuracy thereof and it is submitted subject to errors, omissions, changes, prior sale or lease or withdrawal without notice. Projections, opinions, assumptions and estimates are presented as examples only and may not represent actual performance. Consult tax and legal advisors to perform your own investigation. No commission will be paid to a broker that is representing themselves, their company, another broker or representative of their company, or a member of the broker's family. An affidavit will be required to certify that the principal is not acting as a broker in any manner.