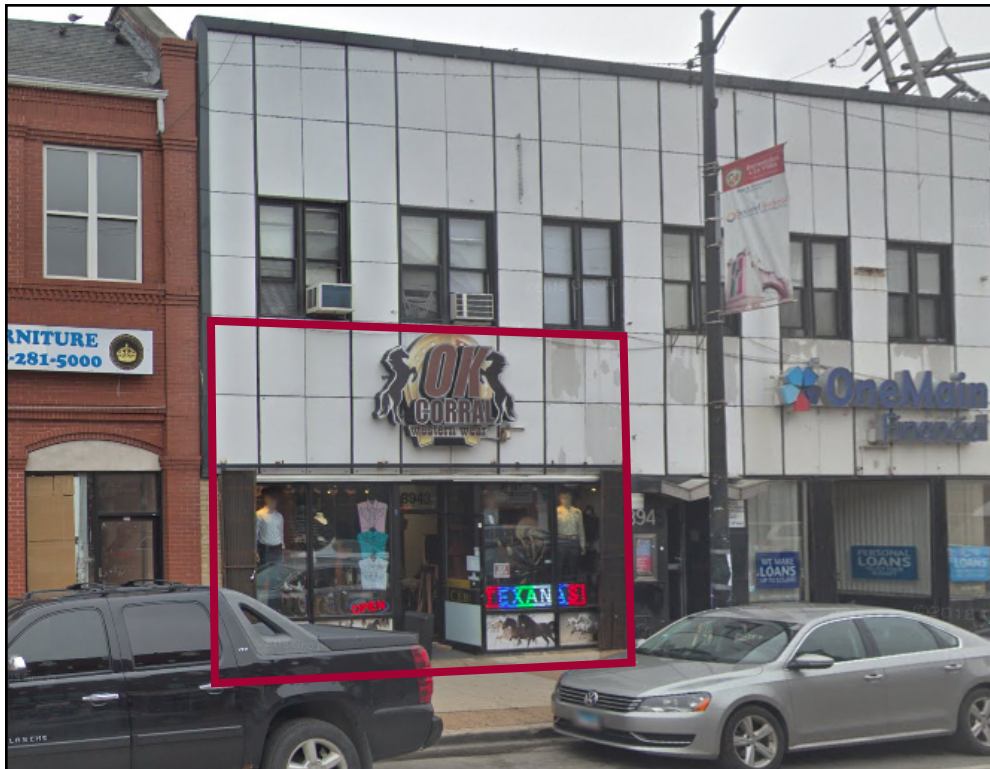


3943 W. 26th St., Chicago, IL

\$20.00/SF MG



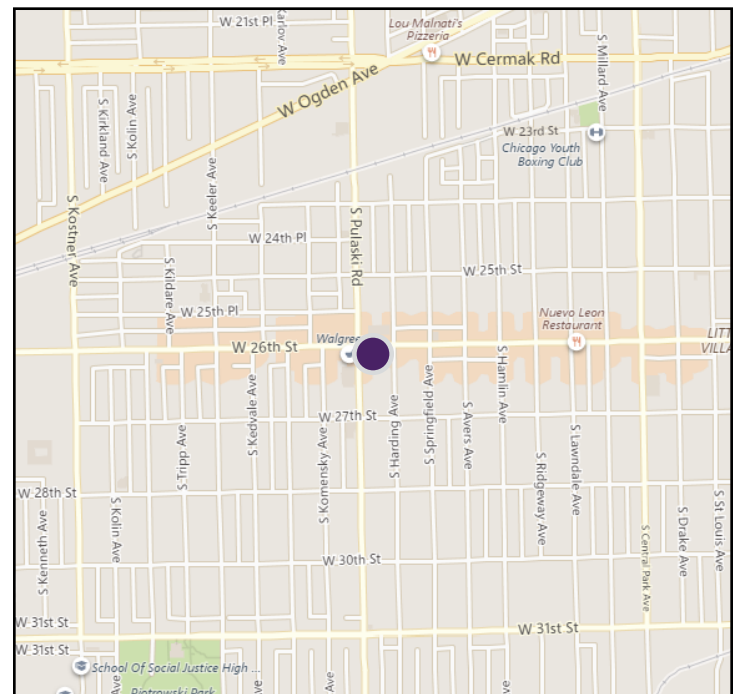
Property Highlights

- 2,900 SF storefront for lease
- Previously used as clothing store
- Co-tenant with financial firm
- Space in vanilla box condition
- Great space for boutique, medical office or cafe/restautant
- Good window line on 26th
- Ample room for signage
- Prime location on 26th St.
- Close to Walgreens, CVS, Chase, a supermarket and more
- Land Area: 6,400 SF
- Zoning: B3-3, pedestrian street
- Traffic Count: 14,800 cars daily

Property Overview

A 2,900 SF storefront, perfect for retail or office use, is available for lease on 26th St. The space was previously used as a clothing store and is in vanilla box condition. Co-tenant with a financial firm, this space has great potential for use as a boutique, a medical office or as a restaurant or cafe. The unit has a good window line on 26th and ample room for signage. This is a prime location in Little Village, close to Walgreens, CVS, Chase, a supermarket and more.

Little Village is a neighborhood on the southwest side of Chicago with a strong Hispanic and Mexican community. 26th Street is a major thoroughfare for the neighborhood with a significant number of shops, restaurants and businesses.



DEMOGRAPHICS	1 Mile	3 Mile	5 Mile
Population	52,334	318,191	903,072
Households	13,395	86,525	289,433
Average Income	\$41,742	\$47,869	\$67,019

Brad Thompson

Vice President
(312) 338 - 3012

bthompson@mpirealestate.com

mpirealestate.com

All information provided herein is from sources deemed reliable. No representation is made as to the accuracy thereof and it is submitted subject to errors, omissions, changes, prior sale or lease or withdrawal without notice. Projections, opinions, assumptions and estimates are presented as examples only and may not represent actual performance. Consult tax and legal advisors to perform your own investigation. No commission will be paid to a broker that is representing the meskee, their company, another broker or representative of their company, or a member of the broker's family. An affidavit will be required to certify that the principal is not acting as a broker in any manner.