

Former Car Dealership With Redevelopment Potential

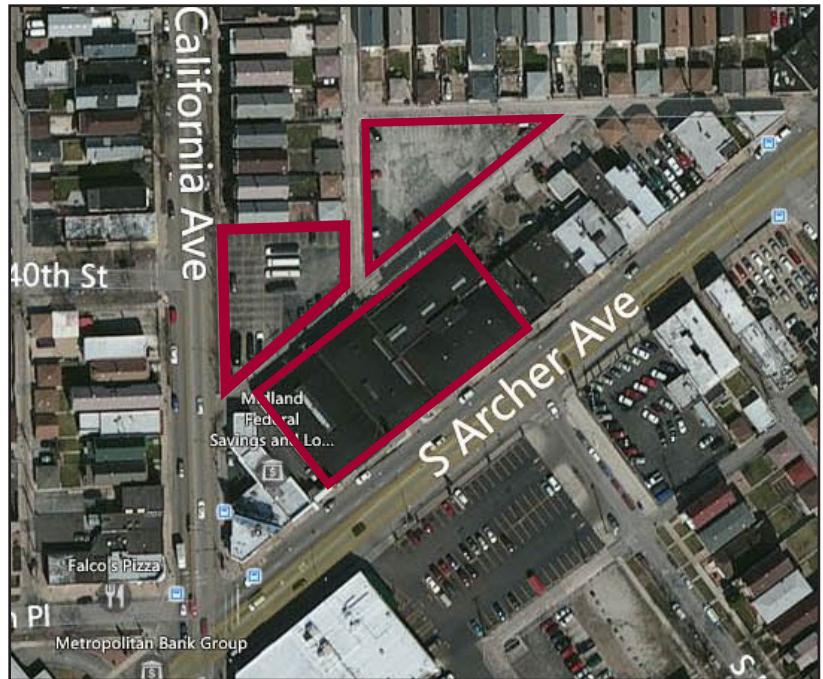
Price
Reduced
\$ 2,350,000

4030 S. Archer Ave. | Chicago, IL

\$ 2,750,000

Investment Highlights

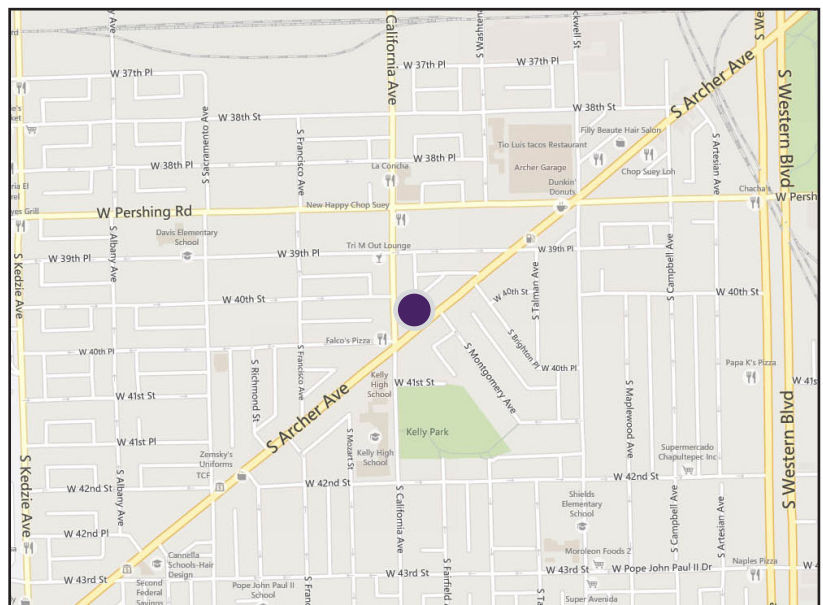
- 30,000 SF former car dealership plus 2 parking lots on California and 39th Pl.
 - Former dealership includes office, auto-repair and showroom spaces
- Potential to redevelop for multiple uses including retail, office, medical office or multi-family with commercial
- Highly visible at key intersection with 250' on Archer, 162' on California
- Clean environmental
- Total Land Area: 1.67 acres (59,527 SF)
- Zoning: C2-2
- Total Taxes (2013): \$69,117



Property Highlights

Previously used as a car dealership, these three parcels are located within a prime commercial and residential area. The property consists of a 30,000 square foot showroom with office space and repair shop as well as two fenced lots used for parking. The building and lots can be redeveloped and repurposed for a variety of uses including office, retail, medical office or multi-family with commercial.

Brighton Park is a neighborhood on the southwest side of Chicago approximately 15 minutes from the Loop. Close to I-55, this is a desirable infill location for many businesses and residents.



Disclaimer: Millennium Properties R/E is the owner's designated agent and makes no warranties or representations as to the accuracy or completeness of the information contained herein. The information has been obtained sources deemed reliable; however, it is up to the purchaser to conduct due diligence prior to sale.

Daniel J. Hyman

President

(312) 338 - 3003

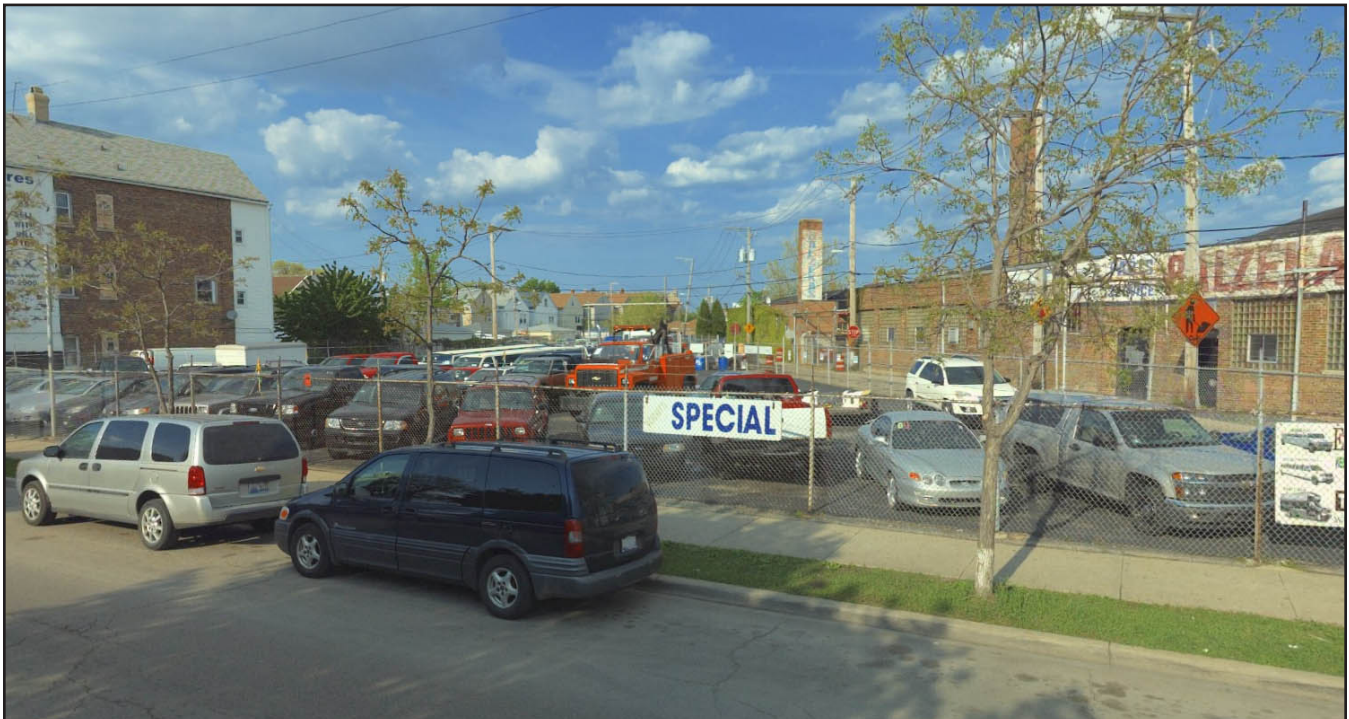
dhyman@mpirealestate.com

**MILLENNIUM
PROPERTIES R/E**

4030 S. Archer Ave. | Chicago, IL

Now:
\$ 2,350,000

Property Photos

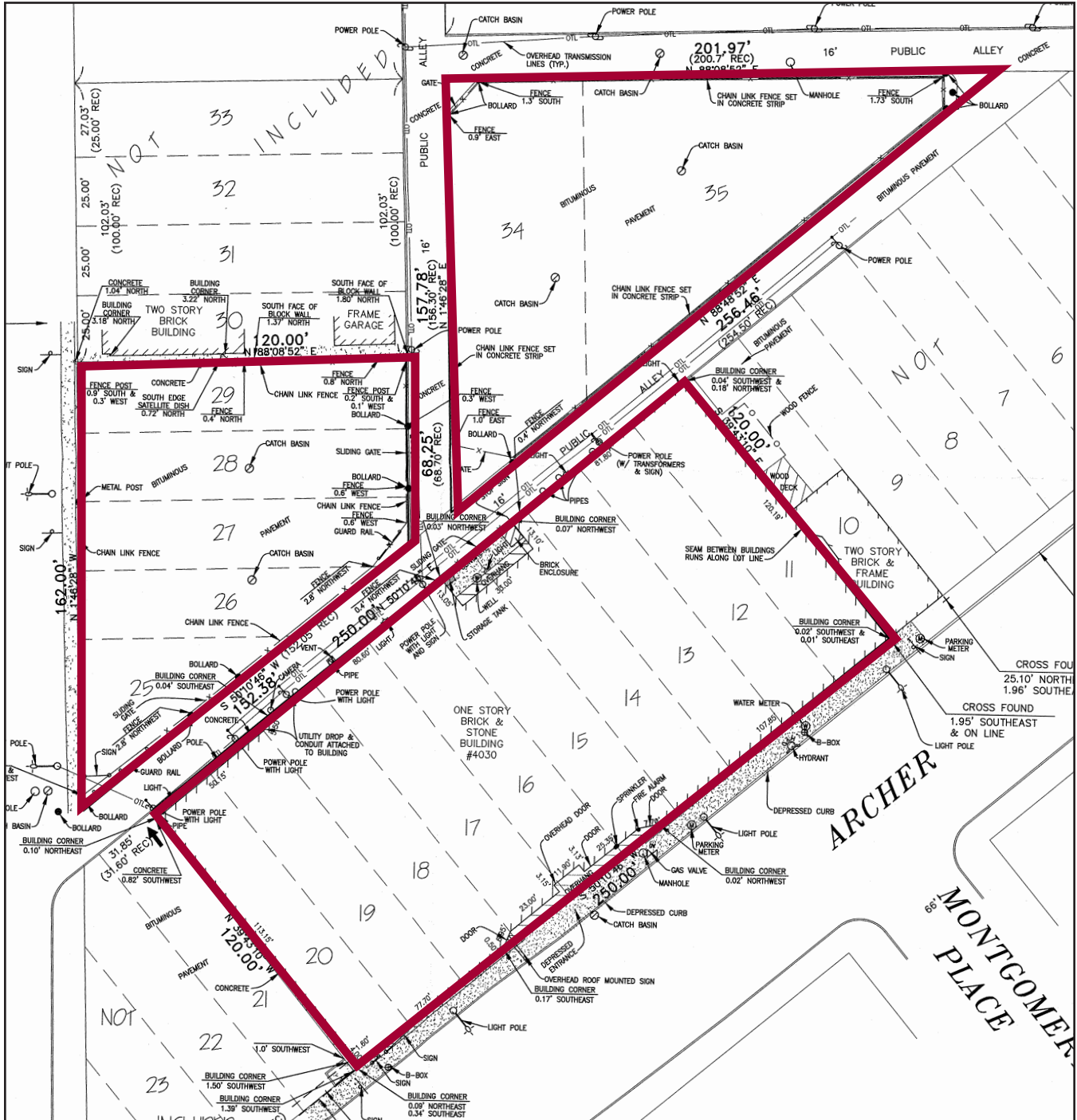


Disclaimer: Millennium Properties R/E is the owner's designated agent and makes no warranties or representations as to the accuracy or completeness of the information contained herein. The information has been obtained sources deemed reliable; however, it is up to the purchaser to conduct due diligence prior to sale.

Daniel J. Hyman
(312) 338-3003
dhyman@mpirealestate.com

MILLENNIUM
PROPERTIES R/E

Survey



Disclaimer: Millennium Properties R/E is the owner's designated agent and makes no warranties or representations as to the accuracy or completeness of the information contained herein. The information has been obtained sources deemed reliable; however, it is up to the purchaser to conduct due diligence prior to sale.

Daniel J. Hyman
 (312) 338-3003
 dhyman@mpirealestate.com

MILLENNIUM
PROPERTIES R/E