

2,200 SF Retail Storefront in Downtown Lake Forest

197 Westminster Ave. | Lake Forest, IL

\$30/SF Gross

Investment Highlights

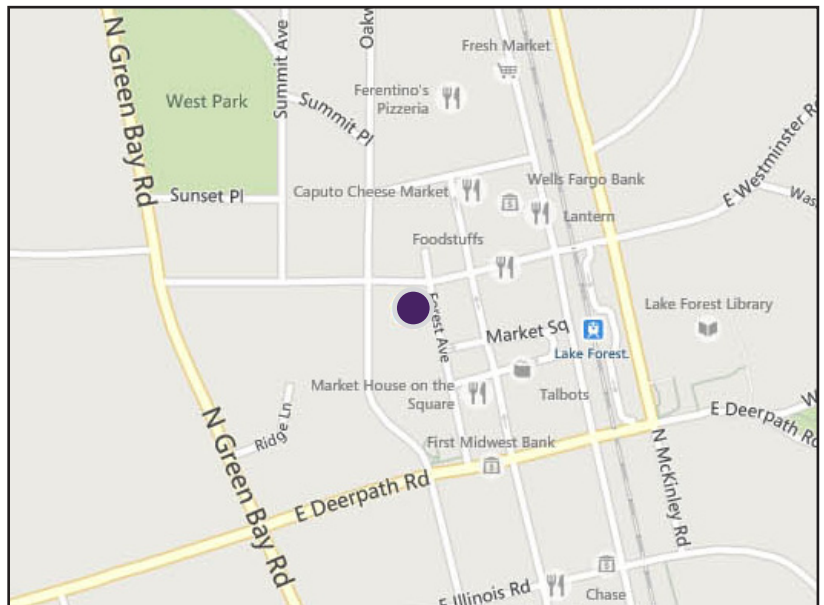
- 2,200 SF free-standing retail
 - Additional 3,500 SF basement
- Co-tenancy with women's clothing store
- Located in downtown Lake Forest
- Near Lake Forest Metra station
- Employee parking for 4 cars
- Customer parking available in nearby lot
- Zoning: B-3, traditional business
- Great location for boutique, coffee shop, restaurant, doctor's office or salon

Property Highlights

Located in the heart of downtown Lake Forest, this 2,200 square foot retail storefront is available for lease. The unit will be a co-tenant with an upscale women's clothing store; the entire 4,400 square foot storefront may be available for the right tenant. The space also features an additional 3,500 square foot basement. This is a great location for a variety of businesses including a boutique, a coffee shop, restaurant, salon or doctor's office. Customer parking is readily available in several public lots nearby.

Area Highlights

Less than two blocks from the Metra, this location is close to a number of retailers and restaurants including Williams-Sonoma, J. Crew, Lake Forest Food and Wine, Starbucks and other Market Square businesses.



Disclaimer: Millennium Properties R/E is the owner's designated agent and makes no warranties or representations as to the accuracy or completeness of the information contained herein. The information has been obtained from sources deemed reliable; however, it is up to the purchaser to conduct due diligence prior to sale.

Brad Thompson

Vice President

(312) 338 - 3012

bthompson@mpirealestate.com

**MILLENNIUM
PROPERTIES R/E**

Property Photos

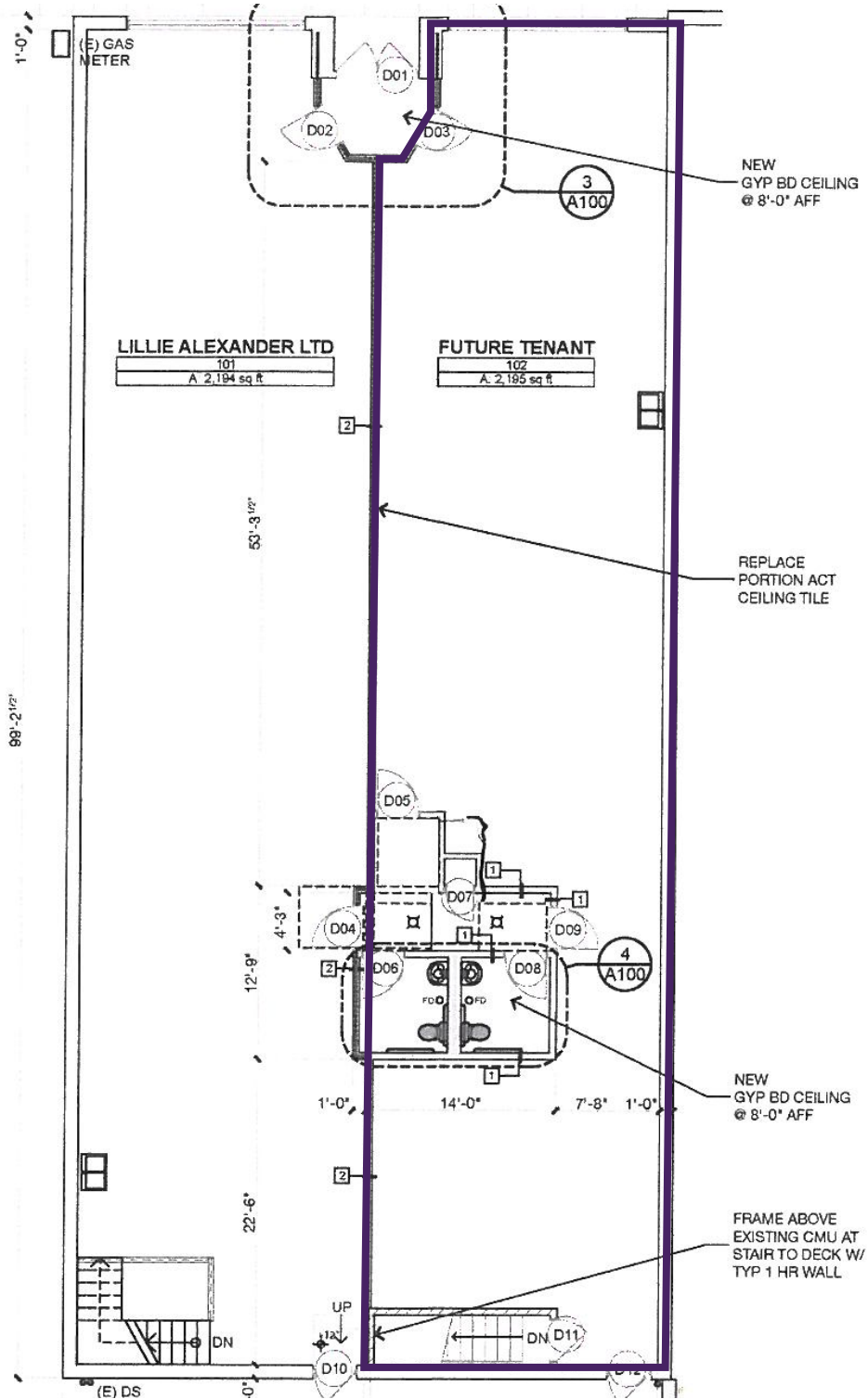


Disclaimer: Millennium Properties R/E is the owner's designated agent and makes no warranties or representations as to the accuracy or completeness of the information contained herein. The information has been obtained sources deemed reliable; however, it is up to the purchaser to conduct due diligence prior to sale.

Brad Thompson
(312) 338-3012
bthompson@mpirealestate.com

MILLENNIUM
PROPERTIES R/E

Floor Plan



Disclaimer: Millennium Properties R/E is the owner's designated agent and makes no warranties or representations as to the accuracy or completeness of the information contained herein. The information has been obtained sources deemed reliable; however, it is up to the purchaser to conduct due diligence prior to sale.

Brad Thompson
(312) 338-3012
bthompson@mpirealestate.com

**MILLENNIUM
PROPERTIES R/E**