

1.9 Acre Commercial Site On Governors Hwy.

BANK ORDERS SALE

21139 Governors Hwy. | Matteson, IL

\$ 12,000

Investment Highlights

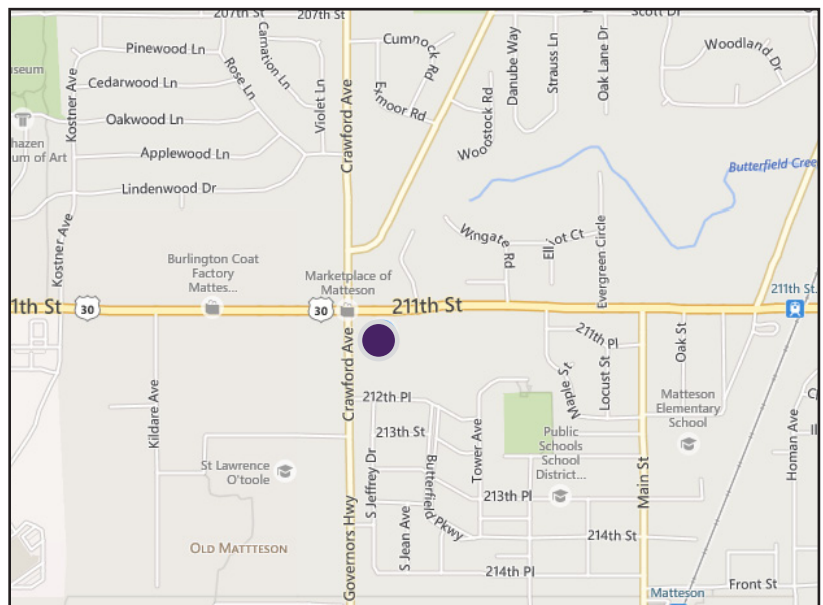
- 1.9 acre commercial development site
- Just off intersection of Lincoln Hwy. and Governors Hwy.
- 123' of frontage on Governors Hwy.
- All utilities available to site
- Currently the site is partially paved
- Great location for retail or medical office
- Traffic Count: 18,600 cars daily
- Zoning: C-2, office
- Taxes (2013): \$29,985

Property Highlights

Just off the intersection of Lincoln and Governors Hwy., this 82,763 square foot development site is a great location for a variety of businesses. This area has a strong retail presence, with gas stations, restaurants, and a variety of retailers nearby. The 123' of frontage, combined with the high traffic volume, creates the opportunity for a number of companies to turn drivers into customers.

Area Highlights

Located in the south suburbs, Matteson has grown substantially over the last decade, nearly doubling its population. With a vibrant commercial community as well as a strong residential consumer base Matteson is a growing suburb with tremendous potential for businesses.



Disclaimer: Millennium Properties R/E is the owner's designated agent and makes no warranties or representations as to the accuracy or completeness of the information contained herein. The information has been obtained from sources deemed reliable; however, it is up to the purchaser to conduct due diligence prior to sale. This property is being sold on an "AS-IS, WHERE-IS" basis with no representations as to the physical, financial or environmental conditions.

Greg Block

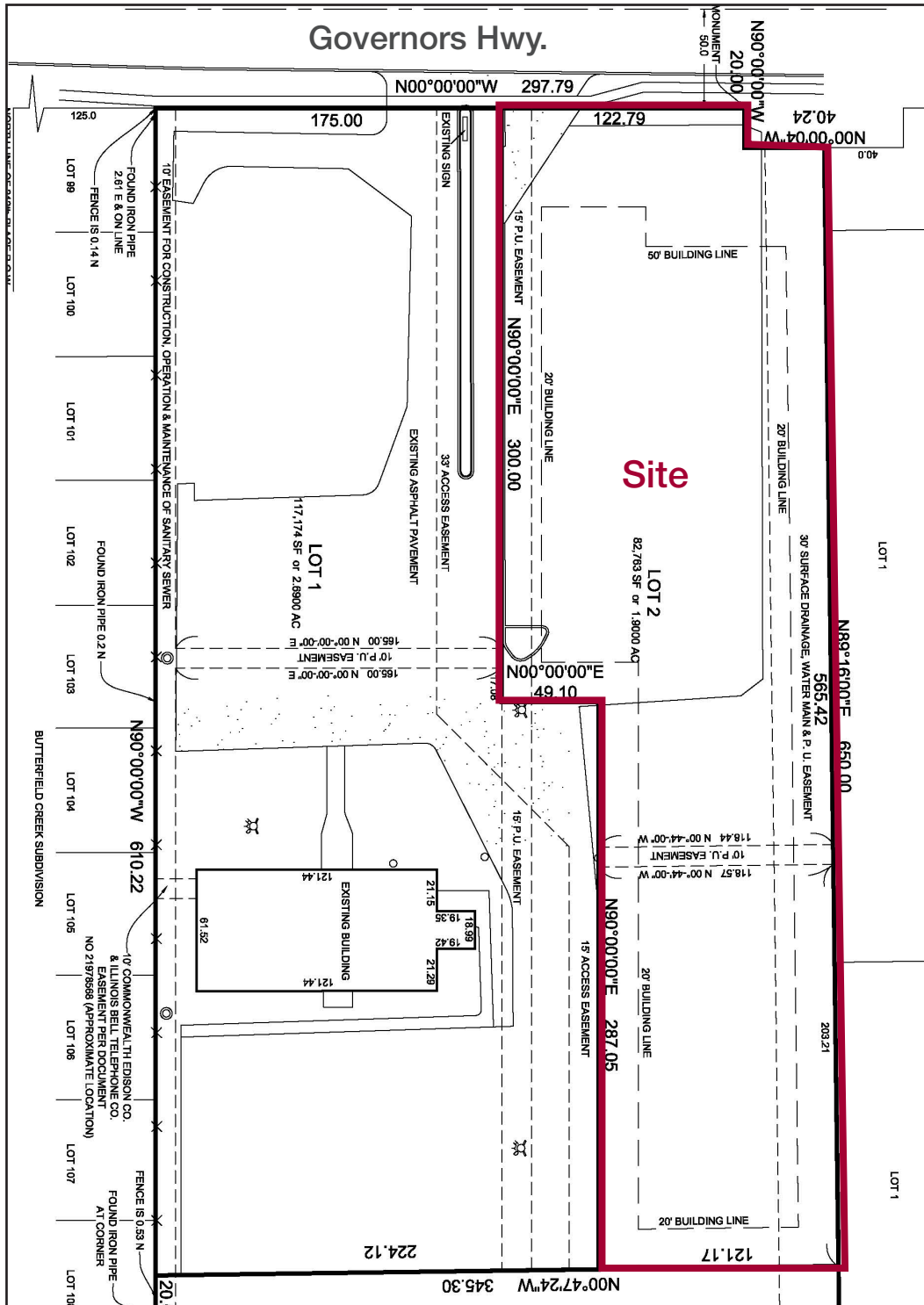
Executive Vice President

(312) 338 - 3002

gblock@mpirealestate.com

**MILLENNIUM
PROPERTIES R/E**

Survey



Disclaimer: Millennium Properties R/E is the owner's designated agent and makes no warranties or representations as to the accuracy or completeness of the information contained herein. The information has been obtained sources deemed reliable; however, it is up to the purchaser to conduct due diligence prior to sale. This property is being sold on an "AS-IS, WHERE-IS" basis with no representations as to the physical, financial or environmental conditions.

Greg Block
 (312) 338-3002
 gblock@mpirealestate.com

MILLENNIUM
PROPERTIES R/E