

MILLENNIUM PROPERTIES R/E For Sale: 15,375 SF Land on Cicero Ave in Belmont Cragin

2841-49 N. Cicero Ave., Chicago, IL

Price Upon Request



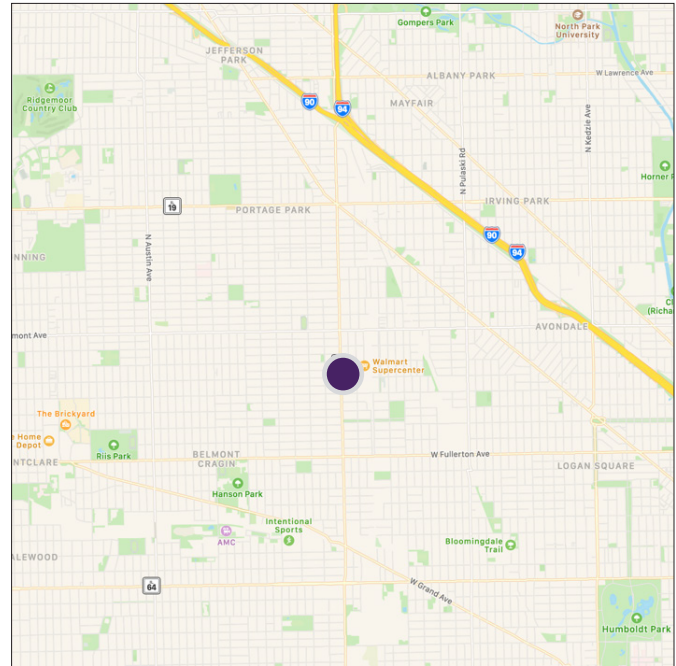
Property Highlights

- 15,375 SF - 5 contiguous lots
- Excellent opportunity for auto or multiple retail uses
- Located in heart of Chicago's Northwest
- Outstanding visibility on Cicero Avenue
- Opportunity for user or developer
- Businesses in the area include: Walmart, Aldi, AutoZone, Menards and more
- Land Area: 123' x 125'
- Traffic count: 31,139 vehicles daily
- Zoning: B1-2
- Taxes (2023): \$13,456.74

Property Overview

On a busy Cicero Avenue between Diversey and Fullerton, this 15,375 square foot parcel is available for sale. The land could be developed for a wide variety of retail uses. The site has low taxes for the area with substantial frontage on Cicero Avenue with easy access to bustling Six Corners. Great opportunity for a user or developer.

The Belmont Cragin community has benefited from steady growth in population and renewed investment. Local businesses enjoy a strong residential consumer base, great public transportation, and quick access to the Expressway.



DEMOGRAPHICS	1 Mile	3 Mile	5 Mile
Population	51,381	403,146	998,242
Households	16,301	146,137	395,730
Median Income	\$63,711	\$69,553	\$79,557

Daniel J. Hyman
President | Designated Managing Broker
(312) 338 - 3003
dhyman@mpirealestate.com

mpirealestate.com

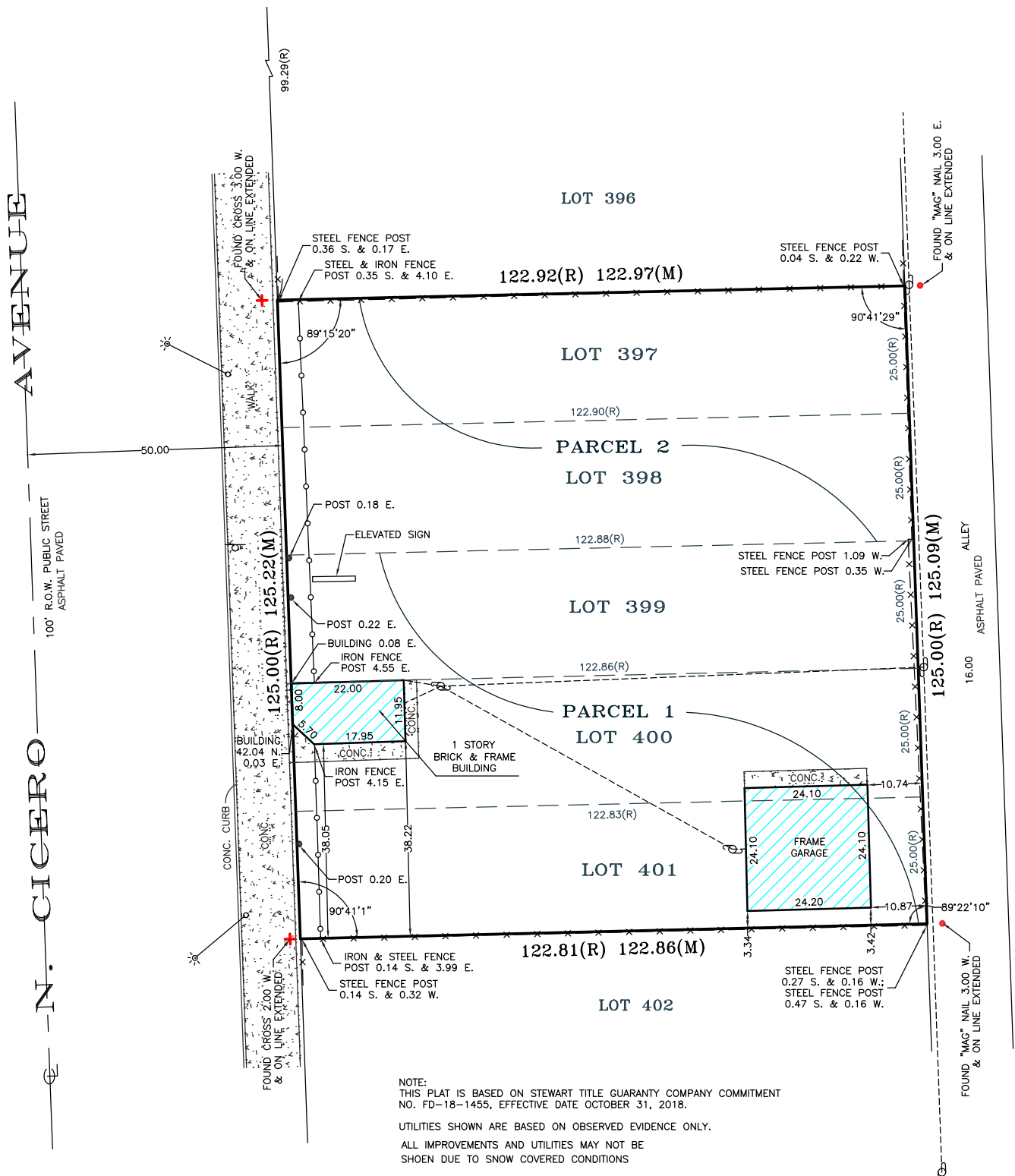
All information provided herein is from sources deemed reliable. No representation is made as to the accuracy thereof and it is submitted subject to errors, omissions, changes, prior sale or lease or withdrawal without notice. Projections, opinions, assumptions and estimates are presented as examples only and may not represent actual performance. Consult tax and legal advisors to perform your own investigation. No commission will be paid to a broker that is representing themselves, their company, another broker or representative of their company, or a member of the broker's family. An affidavit will be required to certify that the principal is not acting as a broker in any manner.

MILLENNIUM PROPERTIES R/E

For Sale: 15,375 SF Land on Cicero Ave in Belmont Cragin

2841-49 N. Cicero Ave., Chicago, IL

Price Upon Request



Daniel J. Hyman
President | Designated Managing Broker
(312) 338 - 3003
dhyman@mpirealestate.com

mpirealestate.com

All information provided herein is from sources deemed reliable. No representation is made as to the accuracy thereof and it is submitted subject to errors, omissions, changes, prior sale or lease or withdrawal without notice. Projections, opinions, assumptions and estimates are presented as examples only and may not represent actual performance. Consult tax and legal advisors to perform your own investigation. No commission will be paid to a broker that is representing themselves, their company, another broker or representative of their company, or a member of the broker's family. An affidavit will be required to certify that the principal is not acting as a broker in any manner.